



<https://www.biodiversitylibrary.org/>

**The Annals and magazine of natural history; zoology, botany, and geology**

London, Taylor and Francis, Ltd.

<https://www.biodiversitylibrary.org/bibliography/15774>

**ser.8:v.9=no.49-54 (1912):**

<https://www.biodiversitylibrary.org/item/61794>

Article/Chapter Title: Article: Descriptions of a new Helicoid land-shell from Cape Colony and a new Succinea from the Zambesi River

Page(s): Page 445

Holding Institution: University of Toronto - Gerstein Science Information Centre

Sponsored by: University of Toronto

Generated 9 July 2021 12:22 PM

<https://www.biodiversitylibrary.org/pdf4/1336297i00061794.pdf>

This page intentionally left blank.



XLV.—*Descriptions of a new Helicoid Land-Shell from Cape Colony and a new Succinea from the Zambezi River.*  
By H. B. PRESTON.

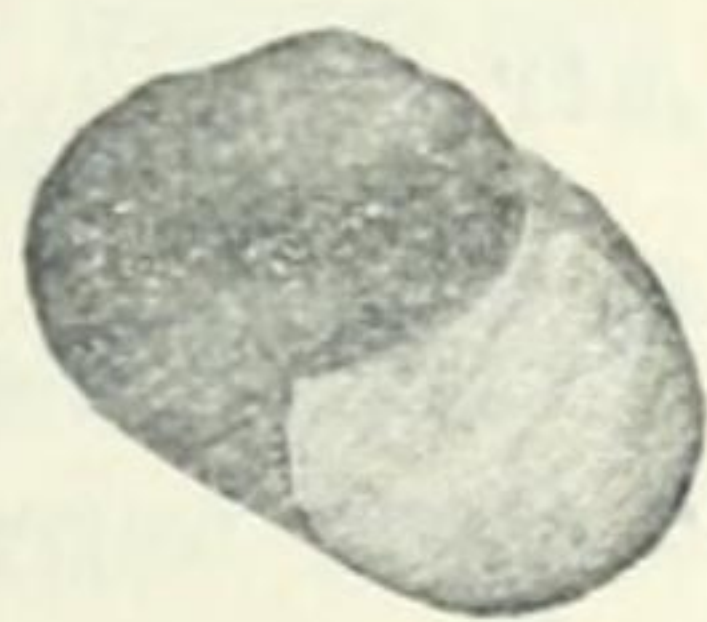
*Natalina o'connori*, sp. n.

Shell imperforate, globosely turbinate, very thin, transparent, pale greenish brown; whorls  $3\frac{1}{2}$ , the last large, convex, marked with rather coarse growth-plicæ and sculptured with wavy spiral lines crossed by very fine transverse striæ, thus presenting a slightly decussate appearance; suture *very narrowly* channelled, amber-coloured; columella almost vertically descending above, somewhat oblique below; labrum simple; aperture roundly ovate.

Alt. 8.25, diam. maj. 11, diam. min. 9.25 mm.

Aperture: alt. 6.75, diam. 5.5 mm.

*Hab.* Ceres District, Cape Colony, on the trunks of eucalyptus-trees (*E. J. O'Connor*).



*Natalina o'connori*.



*Succinea connollyi*.

*Succinea connollyi*, sp. n.

Shell elongately rhomboidal, moderately thin, with obtuse apex, polished, shining, pale brownish-amber colour; whorls 3, rapidly increasing, the last very long, marked with irregular and rather coarse growth-lines, crossed, especially towards the later portion of the last whorl, by scratch-like horizontal striæ; suture impressed; columella descending in a slight curve and diffused above into a coarse, narrow, well-defined callus which reaches the upper margin of the labrum; labrum simple, slightly dilated below and contracted towards its uppermost limit; aperture elongately ovate; interior of shell slightly iridescently nacreous.

Alt. 16, diam. maj. 7.5, diam. min. 5.25 mm.

Aperture: alt. 12, diam. 6 mm.

*Hab.* Victoria Falls, Zambezi River (*M. Connolly*).